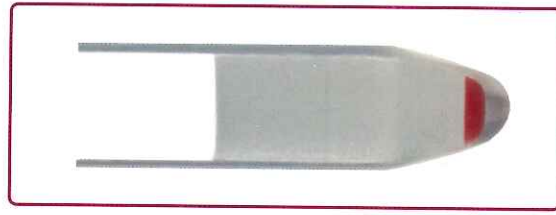
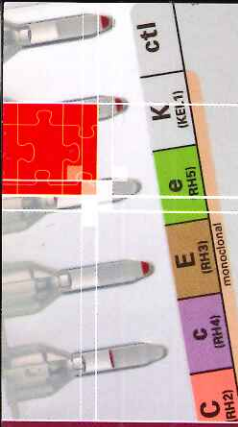
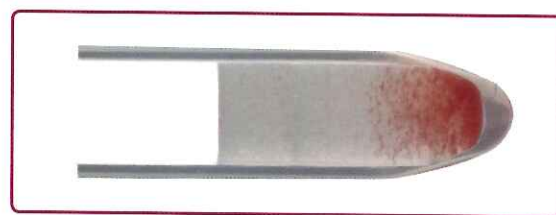


# ID-Card

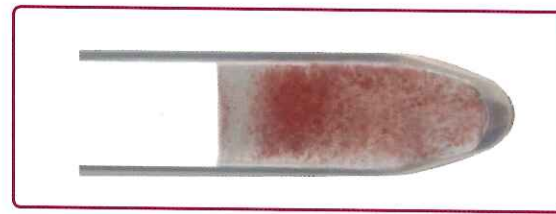
## Interpretation Guide



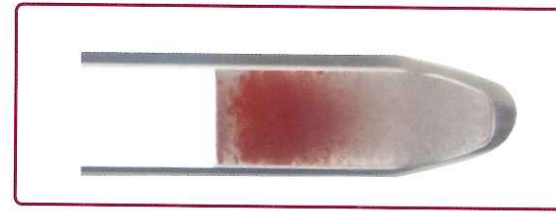
-



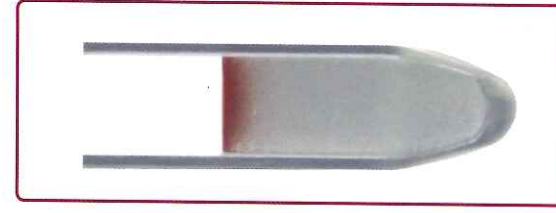
+



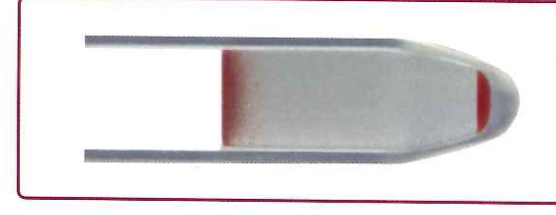
++



+++



++++



dp\*

\* double population



**Bio-Rad Laboratories**

Clinical  
Diagnostics Group

DiaMed GmbH  
1785 Cressier FR  
Switzerland  
[www.bio-rad.com/immunohematology](http://www.bio-rad.com/immunohematology) • Click on ID-System

**Bio-Rad Laboratories is a multinational manufacturer and distributor of clinical diagnostics and life science research products.**



10-31-1299

Printed in France with soy-based inks on paper from sustainably managed forests

© Bio-Rad H008584 03/2015